

HIDDEN SHORES

OVER-ALL BOUNDARY WITH GPS DATA
 A SUBDIVISION BEING A PORTION OF
 SECTION 21, TOWNSHIP-2-SOUTH, RANGE-27-WEST,
 SANTA ROSA COUNTY, FLORIDA

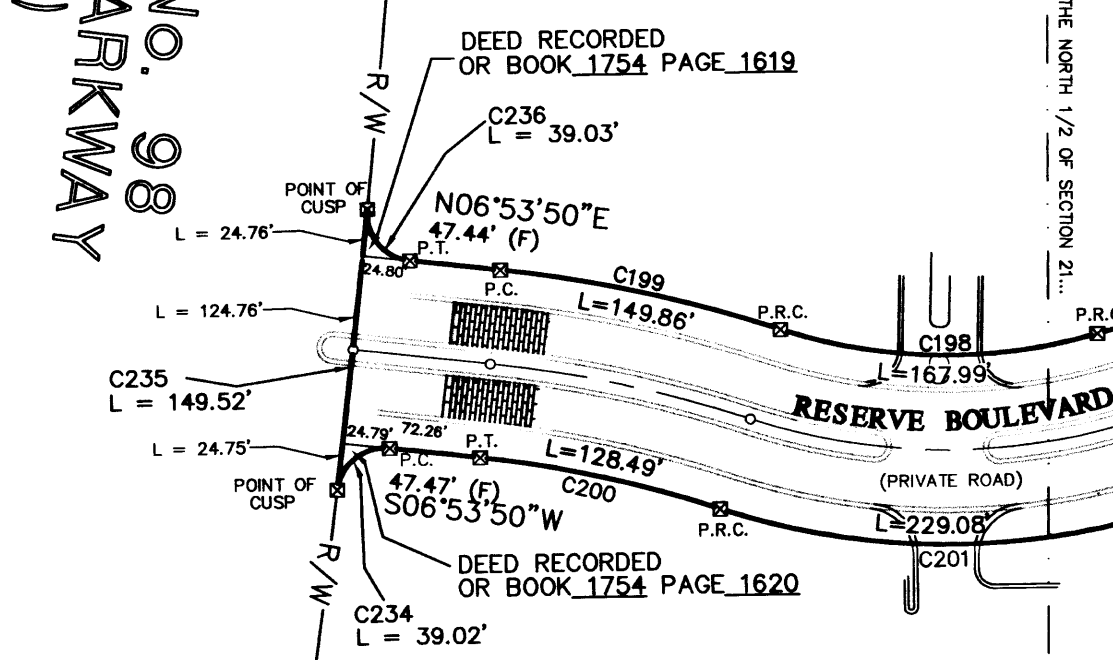
APRIL - 1999

TOTAL ACREAGE
 99.63 ACRES (D)
 98.24 ACRES (F)

TOTAL WETLANDS
 42.52 ACRES (F)

TOTAL UPLANDS
 55.72 ACRES (F)

U.S. HIGHWAY NO. 98
 GULF BREEZE PARKWAY
 (160' R/W)



C.O.E. LINE TABLE

| LINE | DIRECTION | DISTANCE |
|-------|-------------|----------|
| COE1 | S11°06'37"W | 31.20' |
| COE2 | N28°05'49"W | 36.97' |
| COE3 | N02°25'13"E | 32.92' |
| COE4 | N55°55'54"E | 9.64' |
| COE5 | S32°42'48"E | 22.55' |
| COE6 | N56°35'49"E | 18.70' |
| COE7 | S64°06'22"W | 39.59' |
| COE8 | S24°01'42"W | 34.26' |
| COE9 | N58°14'45"E | 41.86' |
| COE10 | S70°07'46"E | 22.34' |
| COE11 | S24°38'38"E | 28.79' |
| COE12 | S22°23'34"E | 35.67' |
| COE13 | S51°18'05"E | 27.53' |
| COE14 | N48°03'40"W | 28.54' |
| COE15 | S31°25'16"W | 27.02' |
| COE16 | S23°47'38"W | 32.43' |
| COE17 | N39°53'27"W | 22.01' |
| COE18 | N39°53'27"W | 18.30' |
| COE19 | S45°15'11"E | 35.28' |
| COE20 | N63°48'53"W | 37.98' |
| COE21 | S74°17'57"W | 36.26' |

D.E.P. LINE TABLE

| LINE | DIRECTION | DISTANCE |
|-------|-------------|----------|
| DEP1 | S49°27'33"W | 36.26' |
| DEP2 | S49°27'33"W | 41.57' |
| DEP3 | N55°21'09"W | 26.96' |
| DEP4 | S87°59'14"W | 31.28' |
| DEP5 | S81°20'25"W | 28.75' |
| DEP6 | S34°56'40"W | 35.93' |
| DEP7 | S81°52'58"W | 32.84' |
| DEP8 | N89°46'50"W | 34.23' |
| DEP9 | N40°40'53"W | 41.80' |
| DEP10 | N53°56'05"W | 40.78' |
| DEP11 | S83°25'25"W | 24.56' |
| DEP12 | N68°58'02"W | 40.07' |
| DEP13 | N76°55'03"W | 43.04' |
| DEP14 | N81°29'53"W | 25.31' |
| DEP15 | S70°28'15"W | 40.58' |
| DEP16 | N65°34'27"W | 41.04' |

STATE PLANE COORDINATES
 HORIZONTAL DATUM: NAD 83 (1990) FLORIDA NORTH ZONE

| STATION | NORTHING (FT) | EASTING (FT) | LATITUDE | LONGITUDE | SCALE FACTOR | CONVERGENCE | SOURCE |
|---------|---------------|--------------|-----------------|-----------------|--------------|---------------|---------|
| GPS-1 | 516880.8840 | 1188703.3970 | 30°24'41.95933" | 86°57'05.51101" | 0.999957492 | -01°13'55.05" | GPS OBS |
| GPS-2 | 519773.4487 | 1188707.3868 | 30°24'22.97305" | 86°57'05.75535" | 0.999957105 | -01°13'55.17" | GPS OBS |

REFERENCE MONUMENTS BELOW

| SRC | NORTHING | EASTING | LATITUDE | LONGITUDE | SCALE FACTOR | CONVERGENCE | SOURCE |
|----------|-------------|--------------|-----------------|-----------------|--------------|---------------|-----------|
| SRC 1069 | 517867.2844 | 1181940.4838 | 30°24'01.15359" | 86°59'42.45533" | 0.999956671 | -01°15'13.92" | PUBLISHED |
| SRC 1070 | 518792.2245 | 1184789.0181 | 30°24'05.97687" | 86°59'09.32721" | 0.999956768 | -01°14'57.57" | PUBLISHED |

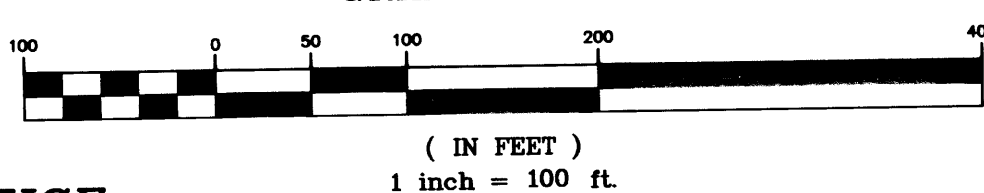
NOTE: THE STATE PLANE COORDINATES AS SHOWN HEREON WERE ESTABLISHED FROM "SANTA ROSA COUNTY GPS NETWORK" FROM MONUMENTS STAMPED "SRC 1069" AND "SRC 1070" AS RECORDED IN PLAT BOOK "G" AT PAGE 35 OF THE PUBLIC RECORDS OF SANTA ROSA COUNTY, FLORIDA, AND ACCURACIES ARE IN ACCORDANCE WITH THE SANTA ROSA COUNTY LAND DEVELOPMENT CODE.

FORMULA TO CONVERT GRID DISTANCE TO GROUND (GEODETIC) DISTANCE:

$$\text{MEAN SCALE FACTOR (MSF)} = \frac{SE + SF}{2}$$

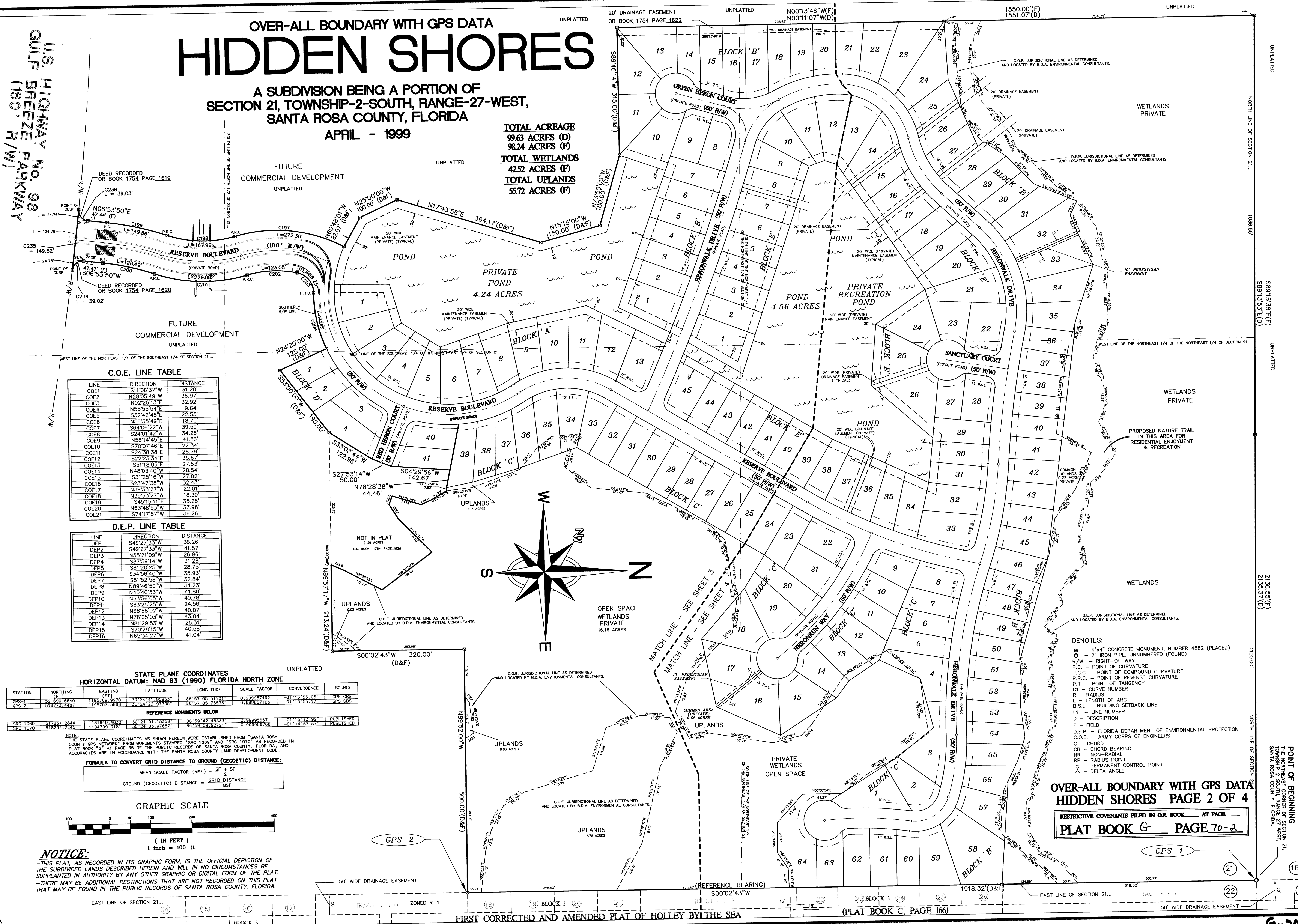
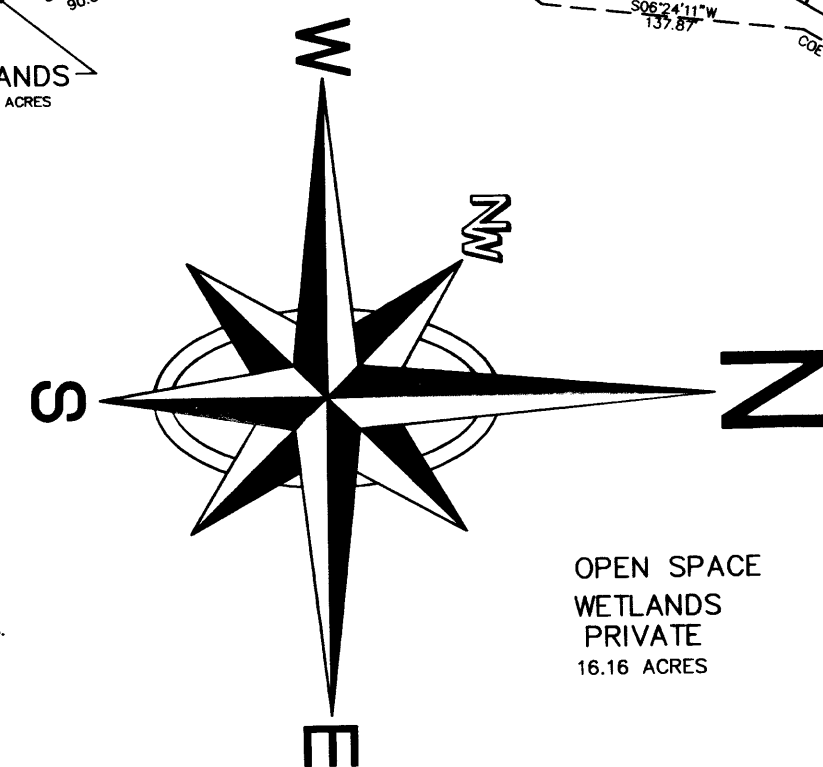
$$\text{GROUND (GEODETIC) DISTANCE} = \frac{\text{GRID DISTANCE}}{\text{MSF}}$$

GRAPHIC SCALE



NOTICE:

THIS PLAT, AS RECORDED IN ITS GRAPHIC FORM, IS THE OFFICIAL DEPICTION OF THE SUBDIVIDED LANDS DESCRIBED HEREIN AND WILL IN NO CIRCUMSTANCES BE SUPPLANTED IN AUTHORITY BY ANY OTHER GRAPHIC OR DIGITAL FORM OF THIS PLAT. THERE MAY BE ADDITIONAL RESTRICTIONS THAT ARE NOT RECORDED ON THIS PLAT THAT MAY BE FOUND IN THE PUBLIC RECORDS OF SANTA ROSA COUNTY, FLORIDA.



OVER-ALL BOUNDARY WITH GPS DATA
 HIDDEN SHORES PAGE 2 OF 4

RESTRICTIVE COVENANTS FILED IN O.R. BOOK _____ AT PAGE _____
 PLAT BOOK G PAGE 70-2

GPS-1

GPS-2

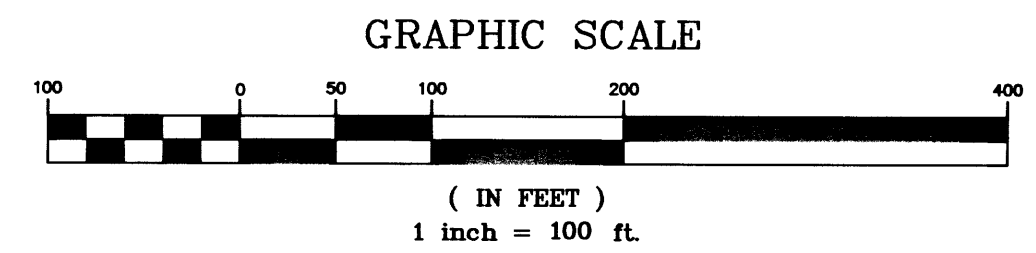
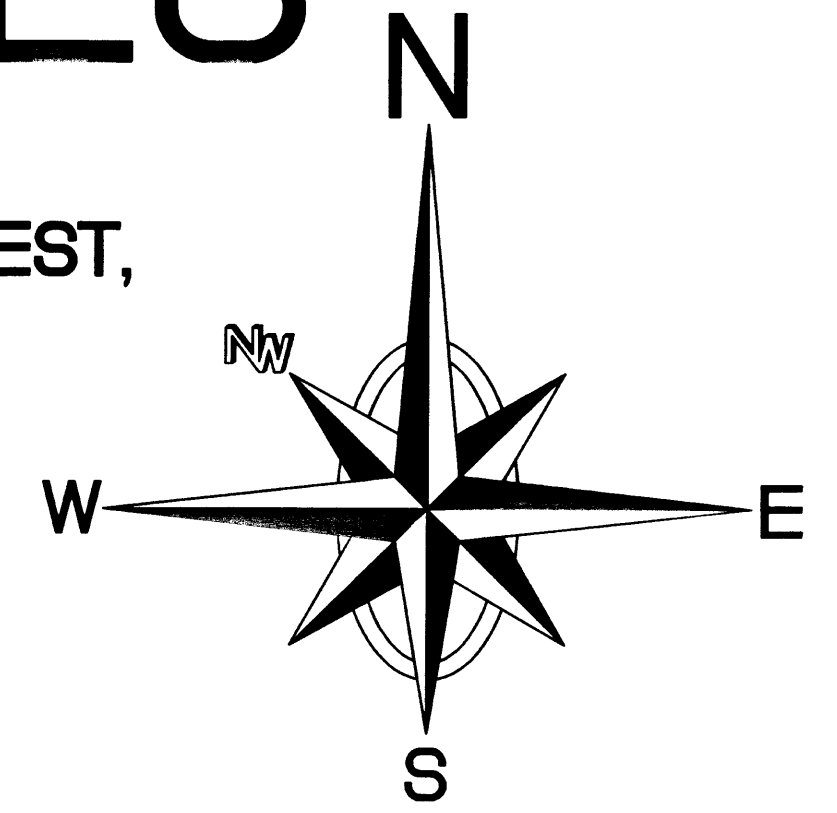
R:\SURV\PLATS\HIDDENSH\7395REC Thu May 06 11:30:08 1999

POINT OF BEGINNING
 THE NORTHEAST CORNER OF SECTION 21,
 TOWNSHIP 2 SOUTH, RANGE 27 WEST,
 SANTA ROSA COUNTY, FLORIDA.
 2136.551'(F)
 2135.371'(D)

G-70(1)

HIDDEN SHORES

A SUBDIVISION BEING A PORTION OF
SECTION 21, TOWNSHIP-2-SOUTH, RANGE-27-WEST,
SANTA ROSA COUNTY, FLORIDA
APRIL - 1999



C.O.E. LINE TABLE

| LINE | DIRECTION | DISTANCE |
|-------|-------------|----------|
| COE1 | S11°06'37"W | 31.20' |
| COE2 | N28°05'49"W | 36.97' |
| COE3 | N02°21'31"E | 32.92' |
| COE4 | N55°55'54"E | 9.64' |
| COE5 | S32°42'48"E | 22.55' |
| COE6 | N56°35'49"E | 18.70' |
| COE7 | S64°06'27"W | 39.59' |
| COE8 | S24°01'42"W | 34.26' |
| COE9 | N58°14'45"E | 41.86' |
| COE10 | S70°07'46"E | 22.34' |
| COE11 | S24°38'58"E | 28.79' |
| COE12 | S22°23'34"E | 35.67' |
| COE13 | S51°18'05"E | 27.53' |
| COE14 | N48°03'40"W | 28.54' |
| COE15 | S31°25'16"W | 27.02' |
| COE16 | S23°47'58"W | 32.43' |
| COE17 | N39°53'27"W | 22.01' |
| COE18 | N39°53'27"W | 18.30' |
| COE19 | S45°15'11"E | 35.28' |
| COE20 | N63°48'53"W | 37.98' |
| COE21 | S74°17'57"W | 36.26' |

D.E.P. LINE TABLE

| LINE | DIRECTION | DISTANCE |
|-------|-------------|----------|
| DEP1 | S49°27'33"W | 36.26' |
| DEP2 | S49°27'33"W | 41.57' |
| DEP3 | N55°21'09"W | 26.96' |
| DEP4 | S87°59'14"W | 31.28' |
| DEP5 | S81°20'25"W | 28.75' |
| DEP6 | S34°56'40"W | 35.93' |
| DEP7 | S81°52'58"W | 32.84' |
| DEP8 | N89°46'50"W | 34.23' |
| DEP9 | N40°40'53"W | 41.80' |
| DEP10 | N53°56'05"W | 40.78' |
| DEP11 | S83°25'25"W | 24.56' |
| DEP12 | N68°58'02"W | 40.07' |
| DEP13 | N76°05'03"W | 43.04' |
| DEP14 | N81°29'53"W | 25.31' |
| DEP15 | S70°28'15"W | 40.58' |
| DEP16 | N65°34'27"W | 31.58' |

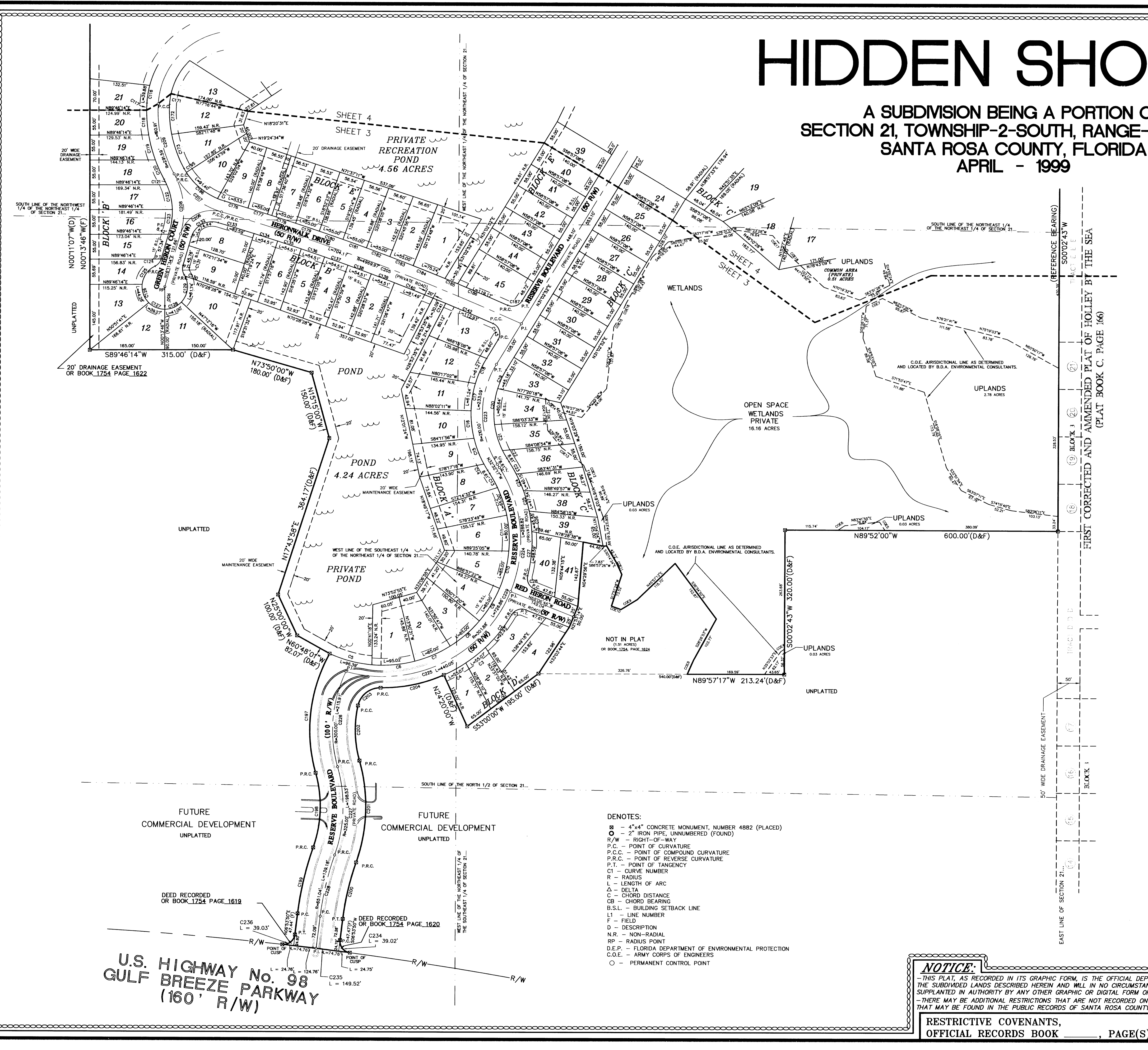
- DENOTES:
- ⊗ - 4"x4" CONCRETE MONUMENT, NUMBER 4882 (PLACED)
 - - 2" IRON PIPE, UNNUMBERED (FOUND)
 - R/W - RIGHT-OF-WAY
 - P.C. - POINT OF CURVATURE
 - P.C.C. - POINT OF COMPOUND CURVATURE
 - P.R.C. - POINT OF REVERSE CURVATURE
 - P.T. - POINT OF TANGENCY
 - CI - CURVE NUMBER
 - R - RADIUS
 - L - LENGTH OF ARC
 - Δ - DELTA
 - C - CHORD DISTANCE
 - CB - CHORD BEARING
 - B.S.L. - BUILDING SETBACK LINE
 - LI - LINE NUMBER
 - F - FIELD
 - D - DESCRIPTION
 - N.R. - NON-RADIAL
 - RP - RADIUS POINT
 - D.E.P. - FLORIDA DEPARTMENT OF ENVIRONMENTAL PROTECTION
 - C.O.E. - ARMY CORPS OF ENGINEERS
 - - PERMANENT CONTROL POINT

NOTICE:
THIS PLAT, AS RECORDED IN ITS GRAPHIC FORM, IS THE OFFICIAL DEPICTION OF THE SUBDIVIDED LANDS DESCRIBED HEREIN AND WILL IN NO CIRCUMSTANCES BE SUPPLANTED IN AUTHORITY BY ANY OTHER GRAPHIC OR DIGITAL FORM OF THE PLAT. THERE MAY BE ADDITIONAL RESTRICTIONS THAT ARE NOT RECORDED ON THIS PLAT THAT MAY BE FOUND IN THE PUBLIC RECORDS OF SANTA ROSA COUNTY, FLORIDA.

RESTRICTIVE COVENANTS,
OFFICIAL RECORDS BOOK _____, PAGE(S) _____

**SOUTH PARCEL
HIDDEN SHORES SHEET 3 OF 4**

PLAT BOOK **G**, PAGE 70-3

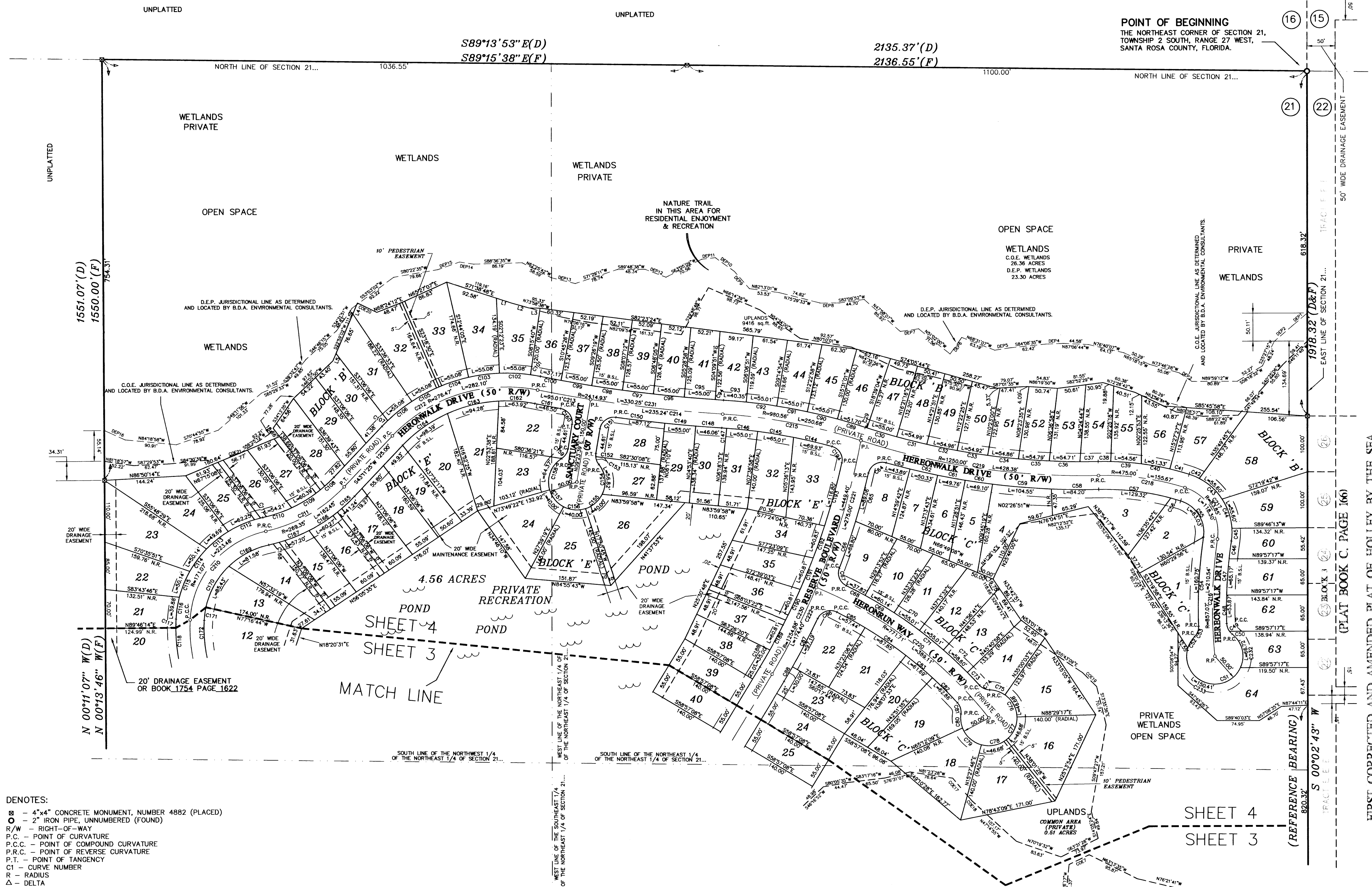
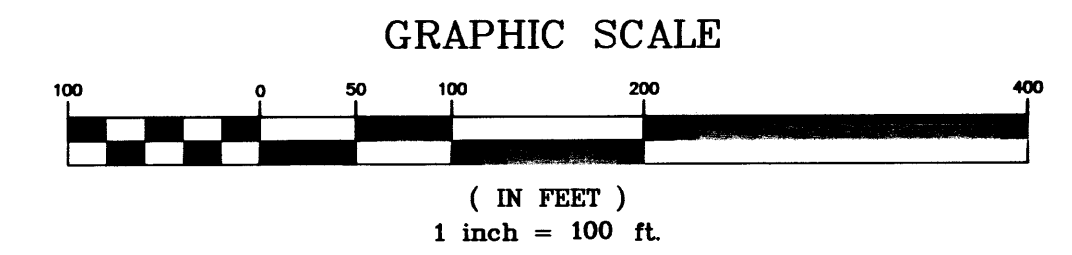
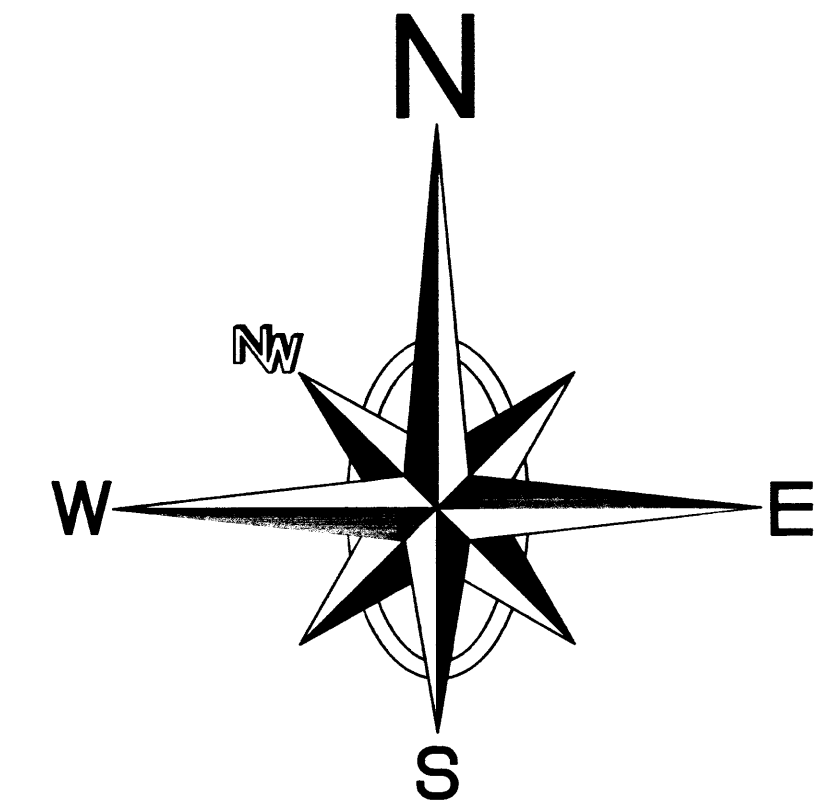


R:\SURV\PLATS\HIDDEN\N7356SEC Thu May 06 11:31:46 1999

HIDDEN SHORES

A SUBDIVISION BEING A PORTION OF
SECTION 21, TOWNSHIP-2-SOUTH, RANGE-27-WEST,
SANTA ROSA COUNTY, FLORIDA

APRIL - 1999



C.O.E. LINE TABLE

| LINE | DIRECTION | DISTANCE |
|-------|-------------|----------|
| COE1 | S11°07'37"W | 31.20' |
| COE2 | N28°05'49"W | 36.97' |
| COE3 | N02°25'13"E | 32.92' |
| COE4 | N55°35'54"E | 36.64' |
| COE5 | S32°42'48"E | 22.55' |
| COE6 | N56°35'49"E | 18.70' |
| COE7 | S64°06'22"W | 39.59' |
| COE8 | S24°01'42"W | 34.26' |
| COE9 | N58°14'45"E | 41.86' |
| COE10 | S70°07'46"E | 22.34' |
| COE11 | S24°38'36"E | 28.79' |
| COE12 | S22°23'34"E | 35.67' |
| COE13 | S51°18'05"E | 27.53' |
| COE14 | N48°03'40"W | 28.54' |
| COE15 | S31°29'18"W | 27.02' |
| COE16 | S23°47'38"W | 32.43' |
| COE17 | N39°53'27"W | 22.01' |
| COE18 | N39°53'27"W | 18.30' |
| COE19 | S45°15'11"E | 35.28' |
| COE20 | N63°48'53"W | 37.98' |
| COE21 | S74°17'57"W | 36.26' |

D.E.P. LINE TABLE

| LINE | DIRECTION | DISTANCE |
|-------|-------------|----------|
| DEP1 | S49°27'33"W | 36.26' |
| DEP2 | S49°27'33"W | 41.57' |
| DEP3 | N52°21'09"W | 26.98' |
| DEP4 | S87°59'14"W | 31.28' |
| DEP5 | S81°20'25"W | 28.75' |
| DEP6 | S34°56'40"W | 35.93' |
| DEP7 | S81°52'58"W | 32.84' |
| DEP8 | N89°46'50"W | 34.23' |
| DEP9 | N40°40'53"W | 41.80' |
| DEP10 | N33°58'05"W | 40.78' |
| DEP11 | S83°25'25"W | 24.56' |
| DEP12 | N68°58'02"W | 40.07' |
| DEP13 | N76°05'05"W | 43.04' |
| DEP14 | N81°29'53"W | 25.31' |
| DEP15 | S70°28'15"W | 40.58' |
| DEP16 | N65°34'27"W | 41.04' |

LOT LINE TABLE

| LINE | DIRECTION | DISTANCE |
|------|-------------|----------|
| L1 | N71°38'48"W | 26.57' |
| L2 | N73°38'38"W | 34.40' |
| L3 | S88°51'25"E | 19.04' |
| L4 | N22°59'02"E | 21.20' |
| L5 | S22°59'02"W | 13.75' |

- NOTES:**
- - 4"x4" CONCRETE MONUMENT, NUMBER 4882 (PLACED)
 - - 2" IRON PIPE, UNNUMBERED (FOUND)
 - R/W - RIGHT-OF-WAY
 - P.C. - POINT OF CURVATURE
 - C - CHORD DISTANCE
 - P.R.C. - POINT OF REVERSE CURVATURE
 - P.T. - POINT OF TANGENCY
 - CI - CURVE NUMBER
 - R - RADIUS
 - Δ - DELTA
 - L - LENGTH OF ARC
 - CD - CHORD DISTANCE
 - CB - CHORD BEARING
 - B.S.L. - BUILDING SETBACK LINE
 - L1 - LINE NUMBER
 - F - FIELD
 - D - DESCRIPTION
 - N.R. - NON-RADIAL
 - RP - RADIUS POINT
 - D.E.P. - FLORIDA DEPARTMENT OF ENVIRONMENTAL PROTECTION
 - C.O.E. - ARMY CORPS OF ENGINEERS
 - - PERMANENT CONTROL POINT

NOTICE:
- THIS PLAT, AS RECORDED IN ITS GRAPHIC FORM, IS THE OFFICIAL DEPICTION OF THE SUBDIVIDED LANDS DESCRIBED HEREIN AND WILL IN NO CIRCUMSTANCES BE SUPPLANTED IN AUTHORITY BY ANY OTHER GRAPHIC OR DIGITAL FORM OF THE PLAT. THERE MAY BE ADDITIONAL RESTRICTIONS THAT ARE NOT RECORDED ON THIS PLAT THAT MAY BE FOUND IN THE PUBLIC RECORDS OF SANTA ROSA COUNTY, FLORIDA.

NORTHWEST FLORIDA ENGINEERING & SURVEYING, INC.
A PROFESSIONAL SERVICE ORGANIZATION
1500 N. Palmetto St.
Pensacola, FL 32501
(850) 432-1052

**NORTH PARCEL
HIDDEN SHORES SHEET 4 OF 4**

R:\SURV\PLATS\HIDDEN\SHV796REC Thu May 06 11:36:35 1999